

-NOTE-

1. ----- MARKER OWNER SCOPE
2. 24V인 경우 F21는 3A 적용

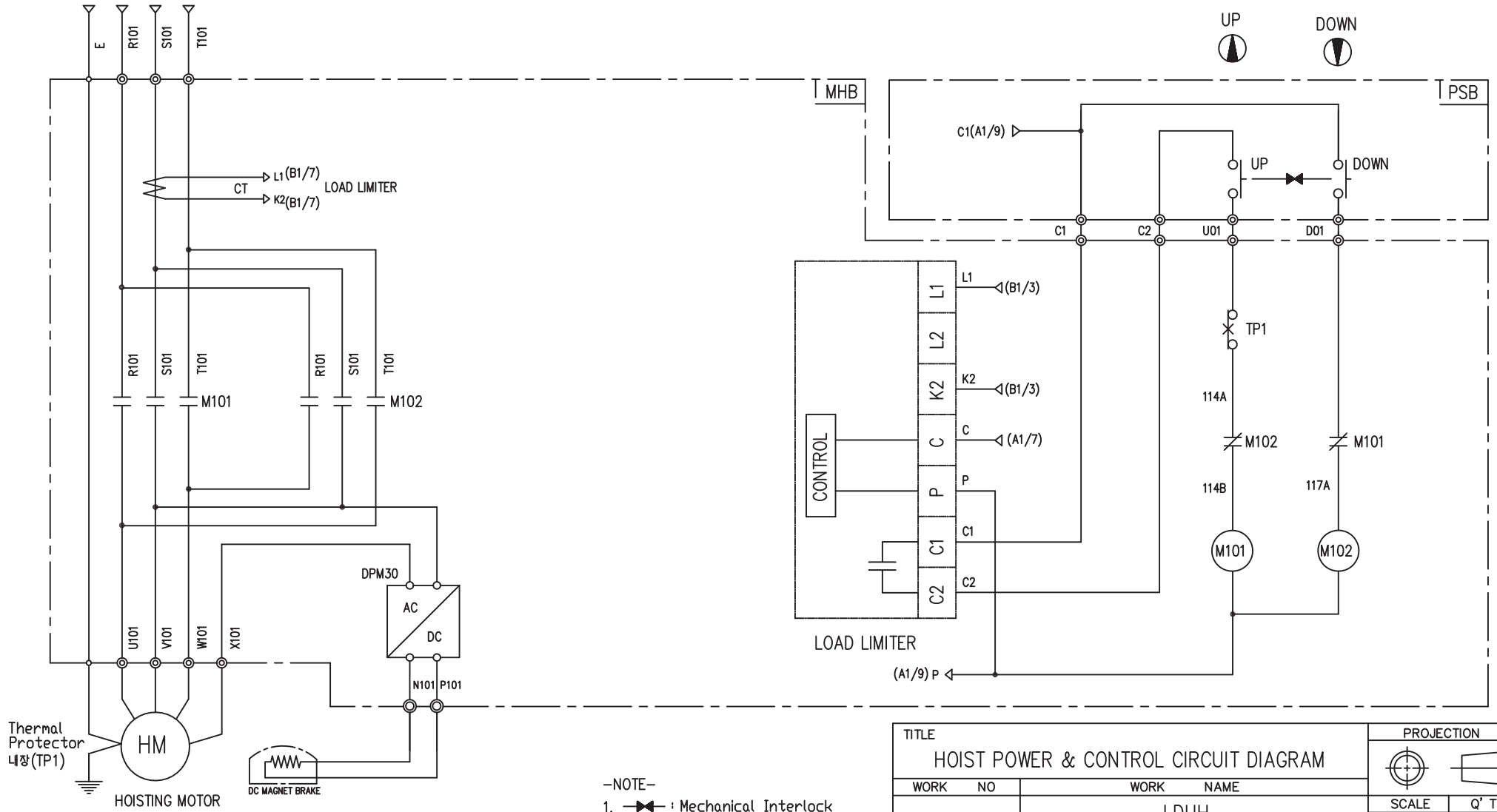
SPECIFICATION	NO FUSE BREAKER	MAGNET CONTACT		TRANSFORMER	FUZE
SYMBOLS	MCCB0	M0		TR10	F11, F12, F21
DESCRIPTION	220V	20A	GMC18	DMC18	30VA
	380V	10A			
	440V	10A			
	460V	10A			
	480V	10A			
MAKER	LS	LS	DONGA	LK	-

TITLE MAIN POWER & CONTROL CIRCUIT DIAGRAM				PROJECTION	
WORK NO		WORK NAME		SCALE	Q' TY
601		LDUH		1/1	1
220V, 380V, 440V, 460V, 480V		DRAWN		DRAWING NO	
LEE.G.H		CHECKED		CODE NO	
2010.10.13		REVIEWED		APPROVED	
<b>L K HOIST CO., LTD.</b>					

HOISTING POWER

(A1/3)(A1/3)(A1/3)(A1/3)

--- PENDANT SWITCH ---



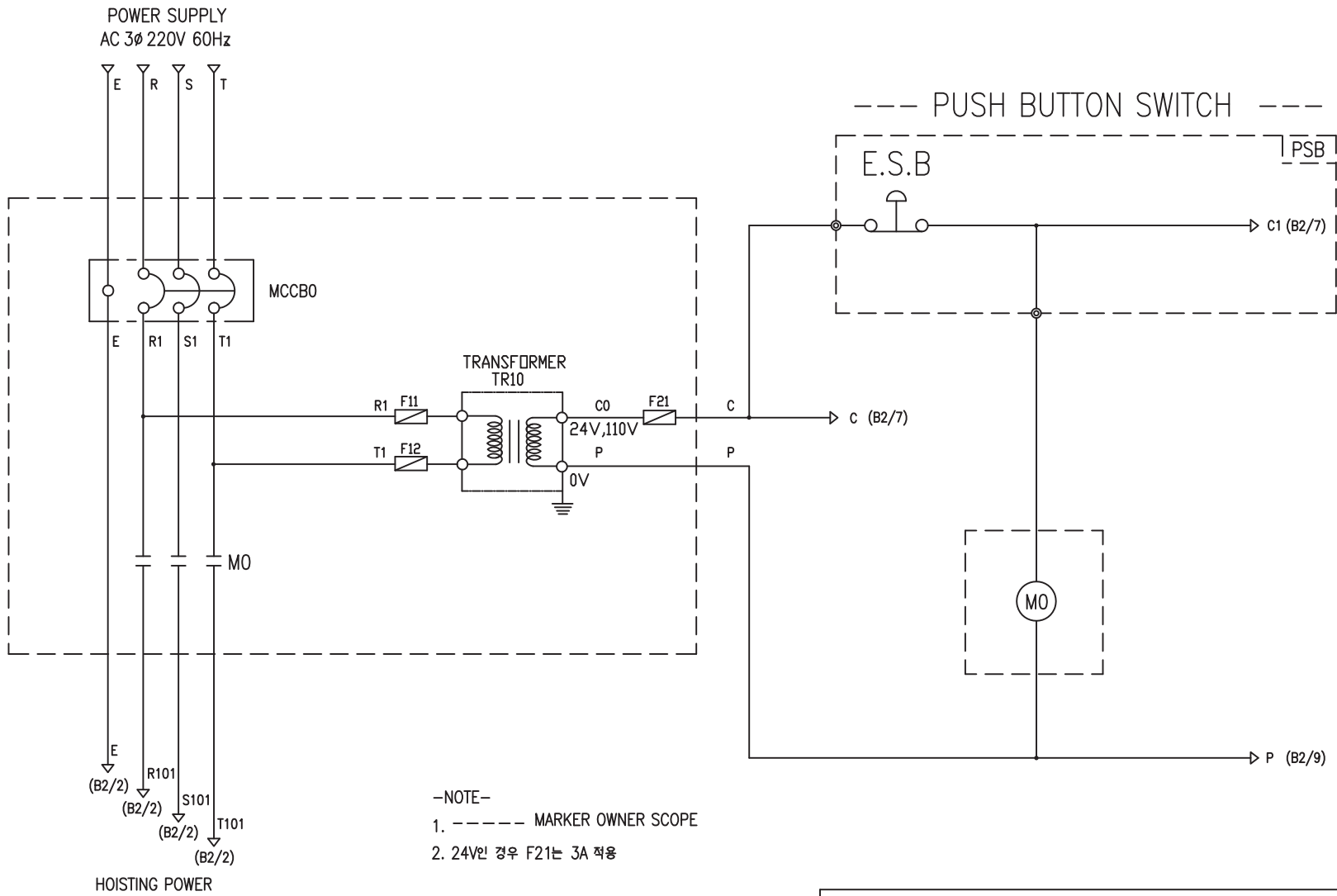
-NOTE-  
1. Mechanical Interlock

SPECIFICATION	MAGNET CONTACT	SILICON RECTIFIER	LOAD LIMITER	Thermal Protector	HOIST MOTOR
SYMBOLS	M101, M102	DPM30	-	TP1	HM
DESCRIPTION	GMC12 DMC12	AC220V/DC99V	LKDL-501	17AM032	1.8Kw * 6P
MAKER	LS DONGA	LK	LK	Texas Instruments	LK

TITLE HOIST POWER & CONTROL CIRCUIT DIAGRAM				PROJECTION 	
WORK NO. 603	WORK NAME LDUH 380V			SCALE 1/1	Q' TY 1
DRAWN LEE.G.H	CHECKED	REVIEWED	APPROVED	MODEL	
2010.10.13				CODE NO	
L K HOIST CO., LTD.					

POWER CIRCUIT

CONTROL CIRCUIT

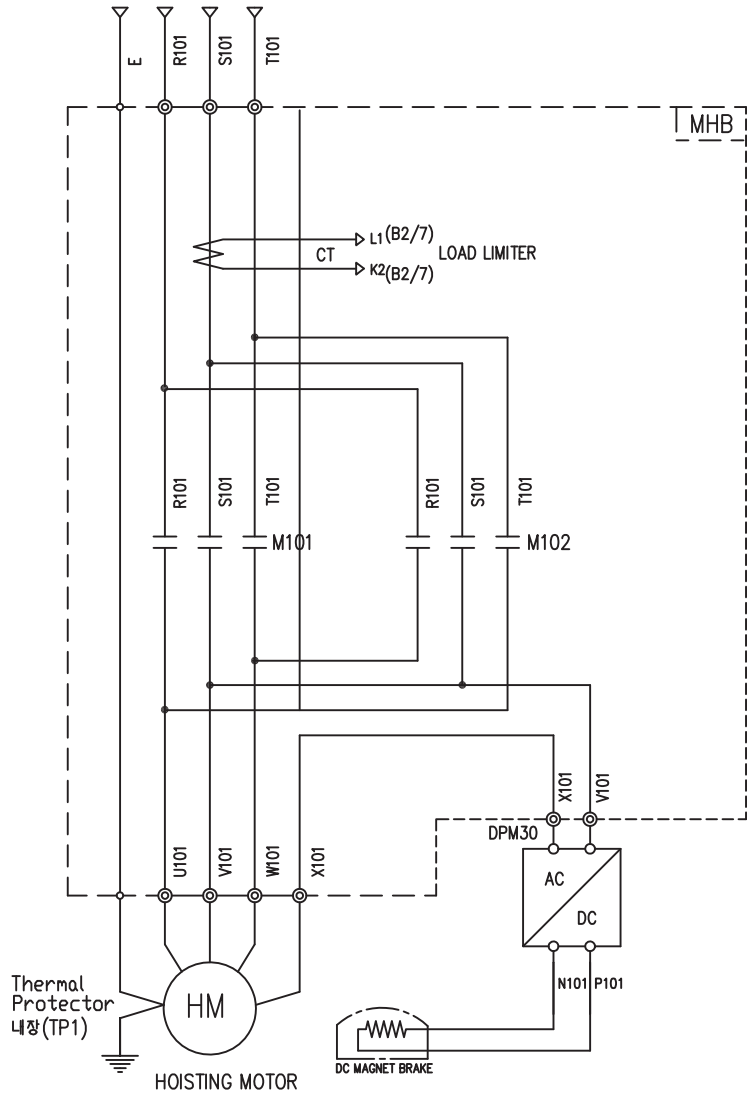


SPECIFICATION	NO FUSE BREAKER	MAGNET CONTACT		TRANSFORMER	FUSE
SYMBOLS	MCCB0	M0		TR10	F11, F12, F21
DESCRIPTION	220V	20A	GMC18	DMC18	30VA
	380V	10A			
	440V	10A			
	460V	10A			
	480V	10A			
MAKER	LS	LS	DONGA	LK	-

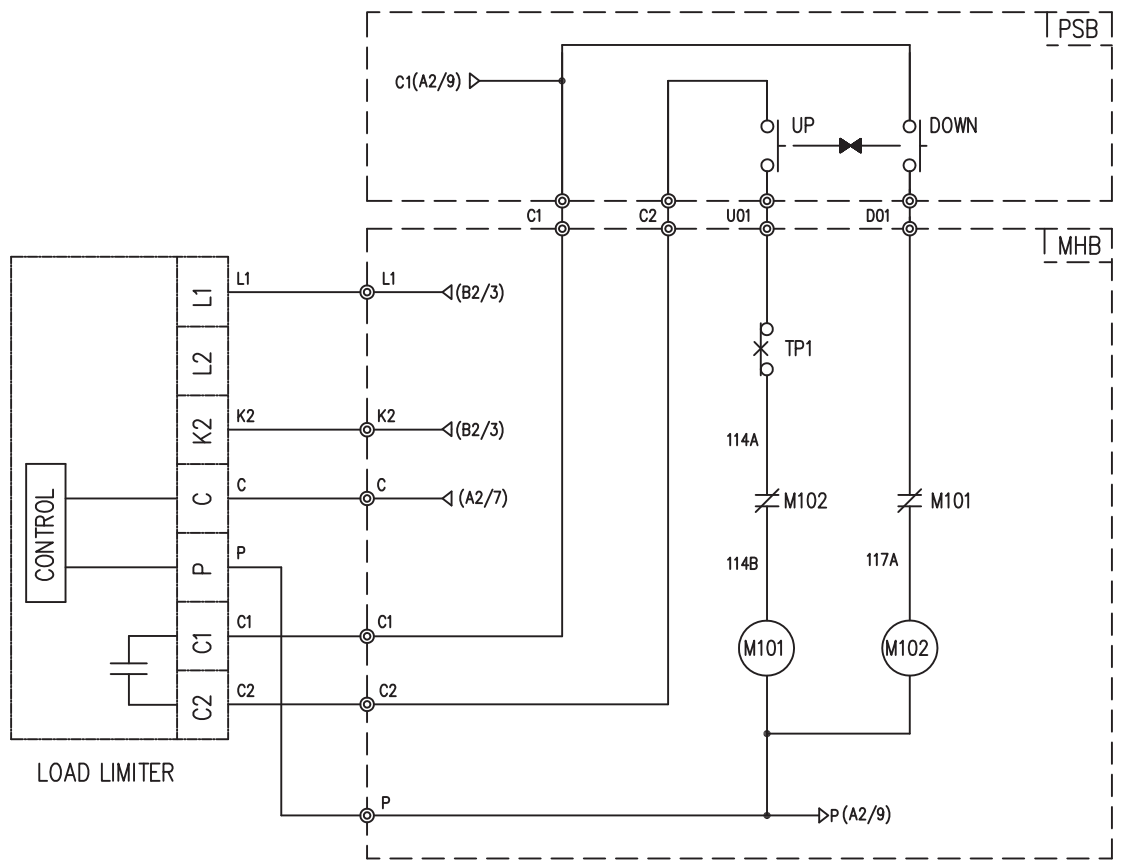
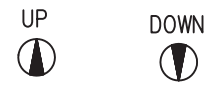
TITLE						PROJECTION	
MAIN POWER & CONTROL CIRCUIT DIAGRAM							
WORK NO	WORK NAME					SCALE	Q' TY
604	LDUH					1/1	1
220V, 380V, 440V, 460V, 480V							
DRAWN	CHECKED	REVIEWED	APPROVED	DRAWING NO			
LEE.G.H				CODE NO			
2010.10.13							
L K HOIST CO., LTD.							

HOISTING POWER

(A2/3)(A2/3)(A2/3)(A2/3)



-- PUSH BUTTON SWITCH --



- NOTE-
- : Mechanical Interlock
  - : Marker owner scope

TITLE						PROJECTION	
HOIST POWER & CONTROL CIRCUIT DIAGRAM							
WORK NO	WORK NAME					SCALE	Q' TY
606	LDUH					1/1	1
380V							
DRAWN	CHECKED	REVIEWED	APPROVED	MODEL			
LEE.G.H				CODE NO			
2010.10.13							

SPECIFICATION	MAGNET CONTACT		SILICON RECTIFIER	LOAD LIMITER	Thermal Protector	HOIST MOTOR
SYMBOLS	M101, M102		DPM30	-	TP1	HM
DESCRIPTION	GMC12	DMC12	AC220V/DC99V	LKDL-501	17AM032	1.8Kw * 6P
MAKER	LS	DONGA	LK	LK	Texas Instruments	LK

## SCHEDULE OF TECHNICAL DATA

1. SERVICE	HOISTING
2. MANUFACTURE	LK . MACHINERY CO. LTD
3. MOTOR MODEL NO	1.8 - 6 - 38
4. RATED POWER	1.8 KW × 6 P
5. RATED VOLTAGE AND FREQUENCY	380 V      60HZ
6. MOTOR TYPE	SQUIRREL CAGE ROTOR TYPE
7. RATING	30 MIN
8. LOCATION	IN-DOOR , OUTDOOR
9. INSULATION CLASS	B
10. DESIGN TEMPERATURE RISE (BY RESISTANCE)	80℃
11. FULL LOAD SPEED	1150 RPM
12. FULL LOAD CURRENT	5.2 A
13. STARTING CURRENT AT RATED VOLTAGE	23.4 A
14. MINIMUM STARTING VOLTAGE	347 V
15. EFFICIENCY AT 100% RATED LOAD	68.5 %
16. POWER FACTOR AT 100% RATED LOAD	64 %
17. STARTING TORQUE	244 %
18. TYPE OF ENCLOSURE	전폐형
19. TYPE OF BEARING	PL : 6008DD    OPL : 6207ZZ
20. MOUNTING	VERTICAL
21. MAXIMUM AMBIENT TEMPURE	40℃
22. BEARING LUBRICATION	GREASE
23. STARTING METHOD	FULL VOLTAGE