

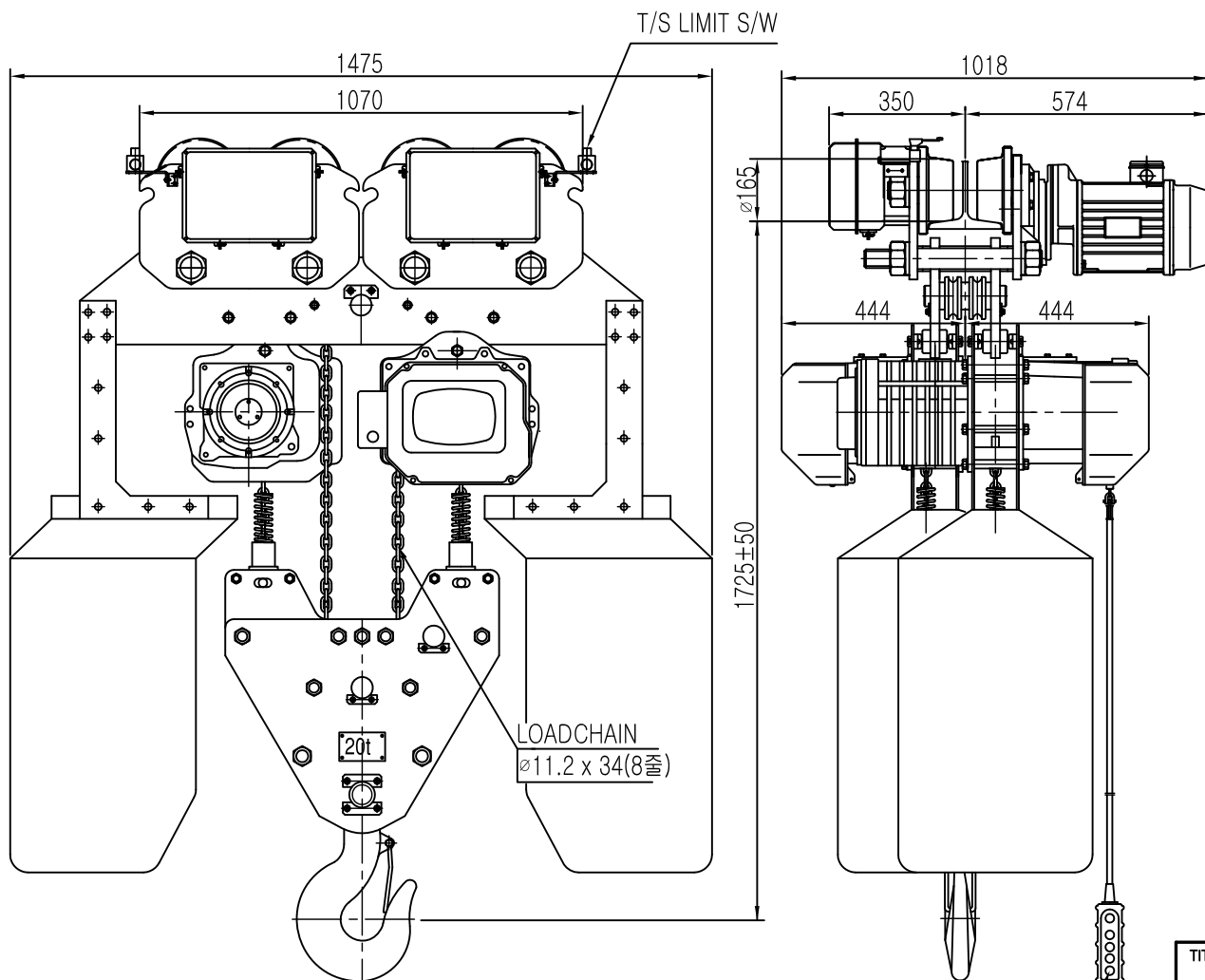
ON 0MG

# L K HOIST

NO	DESCRIPTION	SIZE	MAT'L	Q'TY	WT (kg)	REMARKS

## SPECIFICATION

		LK-DBM-20W		
RATED LOAD (TON)		20		
TESTING LOAD (TON)		25		
LIFTING HEIGHT (M)		50		
HOISTING	SPEED (M/MIN)	1.6/0.5		
	MOTOR (KW)	4.4/2.2kw x 2/6p (2SET)		
TRAVERSING	SPEED (M/MIN)	15	10	15/5
	MOTOR (KW)	1.5kw x 4p (2SET)	1.0kw x 6p (2SET)	1.5/0.5kw x 4/12p (2SET)
POWER SUPPLY		AC220,380,440,460,480Vx3φ x 60 Hz		
OPERATING METHOD		P.B type ON, FL		
LOAD CHAIN		φ11.2 X 34 (8FALL)		
WEIGHT (KG)		1890KG		
I-BEAM 적용폭		150 ~ 190MM		



적용 I-BEAM)

- 1) 지점간거리 : I-300X150X10/18.5-1.3M
- 2) 지점간거리 : I-450X175X13/26-3.0M
- 3) 지점간거리 : I-600X190X13/25-4.5M

NOTE)

- 1) 점검 설비를 갖출 것
- 2) 인허가 서류를 완성검사시 제출 할 것

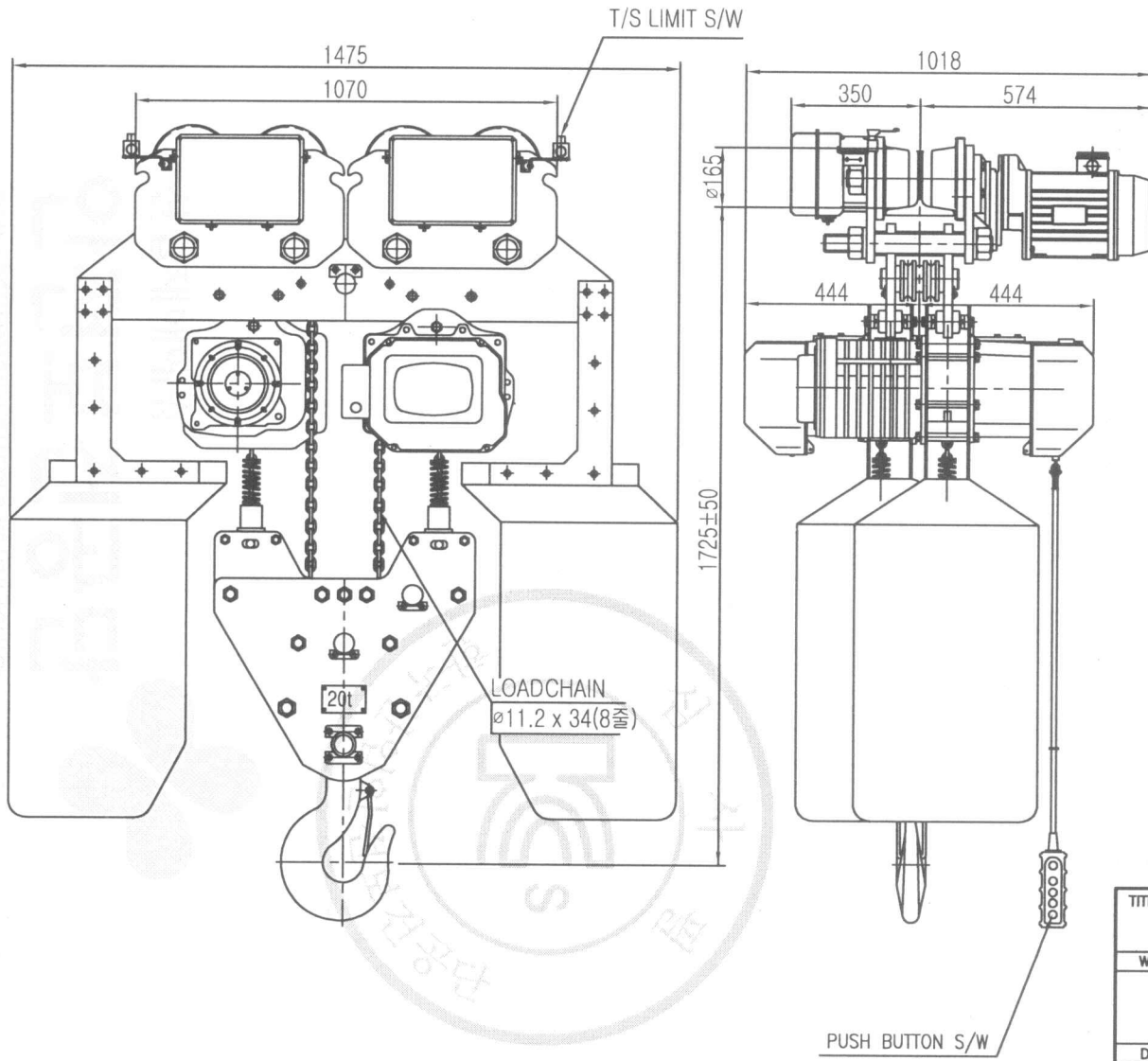
TITLE		PROJECTION	
DBM-20W ELECTRIC CHAIN HOIST			
WORK NO	WORK NAME	SCALE	Q' TY
		N S	1
DRAWN	CHECKED	REVIEWED	APPROVED
김 창 기			
2010.08.01			
DRAWING NO		CODE NO	

REV.NO	DATE	REVISION	DESCRIPTION	DRAWN	CHECKED	APPROVED

ON 3MD

# L K HOIST

NO	DESCRIPTION	SIZE	MAT' L	Q' TY	WT (kg)	REMARKS



## SPECIFICATION

		LK-DBM-20W		
RATED LOAD	(TON)	20		
TESTING LOAD	(TON)	25		
LIFTING HEIGHT	(M)	50		
HOISTING	SPEED (M/MIN)	1.6/0.5		
	MOTOR (KW)	4.4/2.2kw x 2/6p (2SET)		
TRAVERSING	SPEED (M/MIN)	15	10	15/5
	MOTOR (KW)	1.5kw x 4p (2SET)	1.0kw x 6p (2SET)	1.5/0.5kw x 4/12p (2SET)
		POWER SUPPLY		
OPERATING METHOD		P.B type ON . FL		
LOAD CHAIN		φ11.2 X 34 (8FALL)		
WEIGHT (KG)		1890KG		
I-BEAM 적용폭		150 ~ 190MM		

적용 I-BEAM)

- 1) 지점간거리 : I-300X150X10/18.5-1.3M
- 2) 지점간거리 : I-450X175X13/26-3.0M
- 3) 지점간거리 : I-600X190X13/25-4.5M

NOTE)

- 1) 점검 설비를 갖출 것
- 2) 인허가 서류를 완성검사시 제출 할 것

TITLE				PROJECTION	
DBM-20W ELECTRIC CHAIN HOIST					
WORK NO	WORK NAME			SCALE	Q' TY
				N S	1
DRAWN	CHECKED	REVIEWED	APPROVED	DRAWING NO	
김 창 기				CODE NO	
2010.08.01					
L K HOIST CO., LTD.					

REV.NO	DATE	REVISION	DESCRIPTION	DRAWN	CHECKED	APPROVED

물범복제 및 배포금지