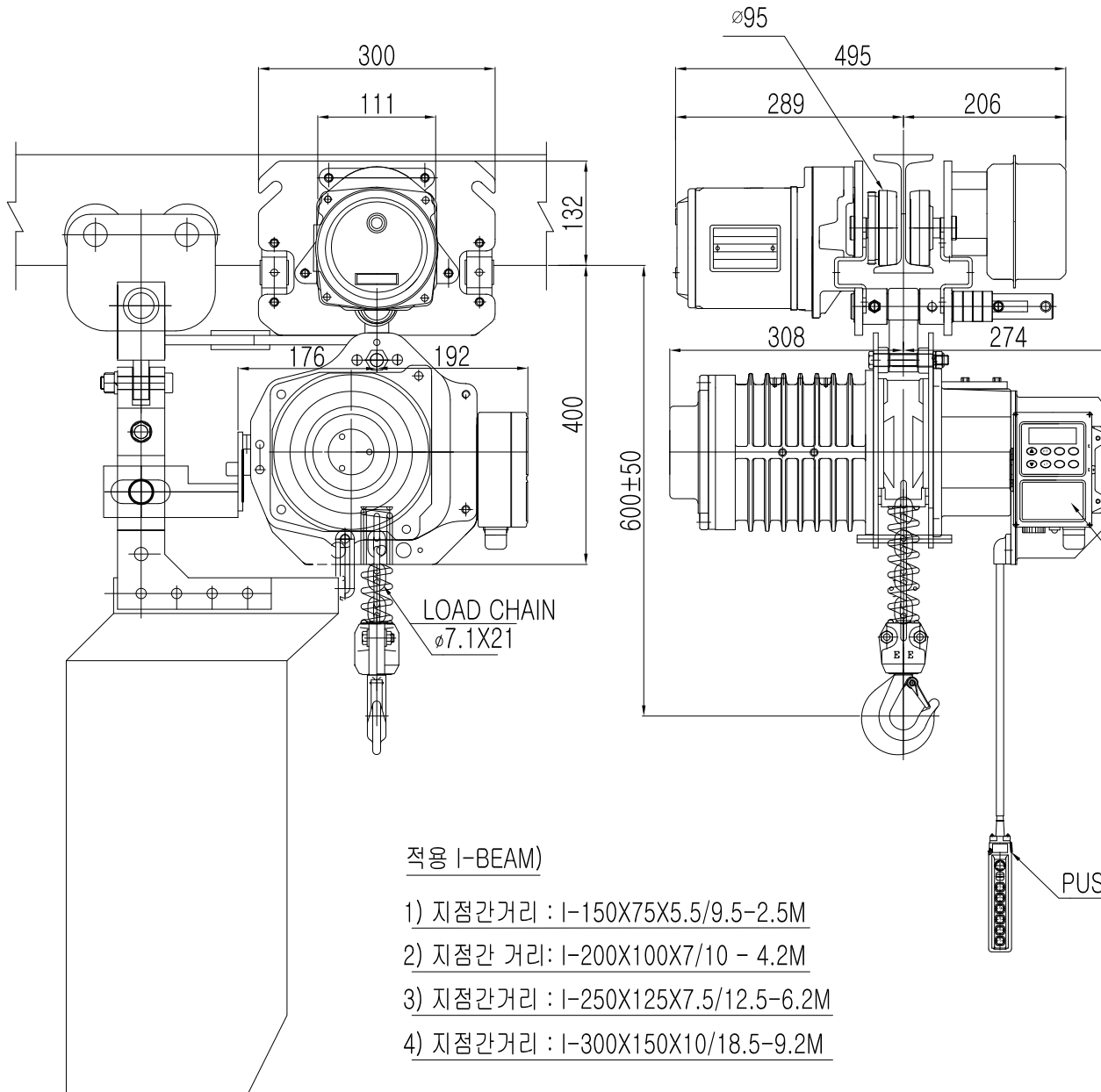


L K HOIST

NO	DESCRIPTION	SIZE	MAT' L	Q' TY	WT (kg)	REMARKS



SPECIFICATION

		LK-DAMH-1S		
RATED LOAD	(TON)	1.0		
TESTING LOAD	(TON)	1.25		
LIFTING HEIGHT	(M)	100		
HOISTING	SPEED (M/MIN)	8.2		
	MOTOR (KW)	1.8kw x 4p		
TRAVERSING	SPEED (M/MIN)	22	14	22/7
	MOTOR (KW)	0.4kw x 4p	0.3kw x 6p	0.4/0.14kw x 4/12p
POWER SUPPLY	AC220.380.440.460.480Vx3ø x 60 Hz			
OPERATING METHOD	P.B type ON . FL			
LOAD CHAIN	ø7.1 X 21 (1FALL)			
WEIGHT	(KG)	280		
I-BEAM 적용폭	75 ~ 150MM			

NOTE)

- 1) 점검 설비를 갖출 것
- 2) 인허가 서류를 완성검사시 제출 할 것

적용 I-BEAM)

- 1) 지점간거리 : I-150X75X5.5/9.5-2.5M
- 2) 지점간 거리: I-200X100X7/10 - 4.2M
- 3) 지점간거리 : I-250X125X7.5/12.5-6.2M
- 4) 지점간거리 : I-300X150X10/18.5-9.2M

PUSH BUTTON S/W

TITLE		ELECTRIC CHAIN HOIST DAMH-1S			PROJECTION	
WORK NO	WORK NAME			SCALE	Q' TY	1
	LK-DAMH-1S					
DRAWN	CHECKED	REVIEWED	APPROVED	DRAWING NO		
김 창 기				CODE NO		
2010.08.01						

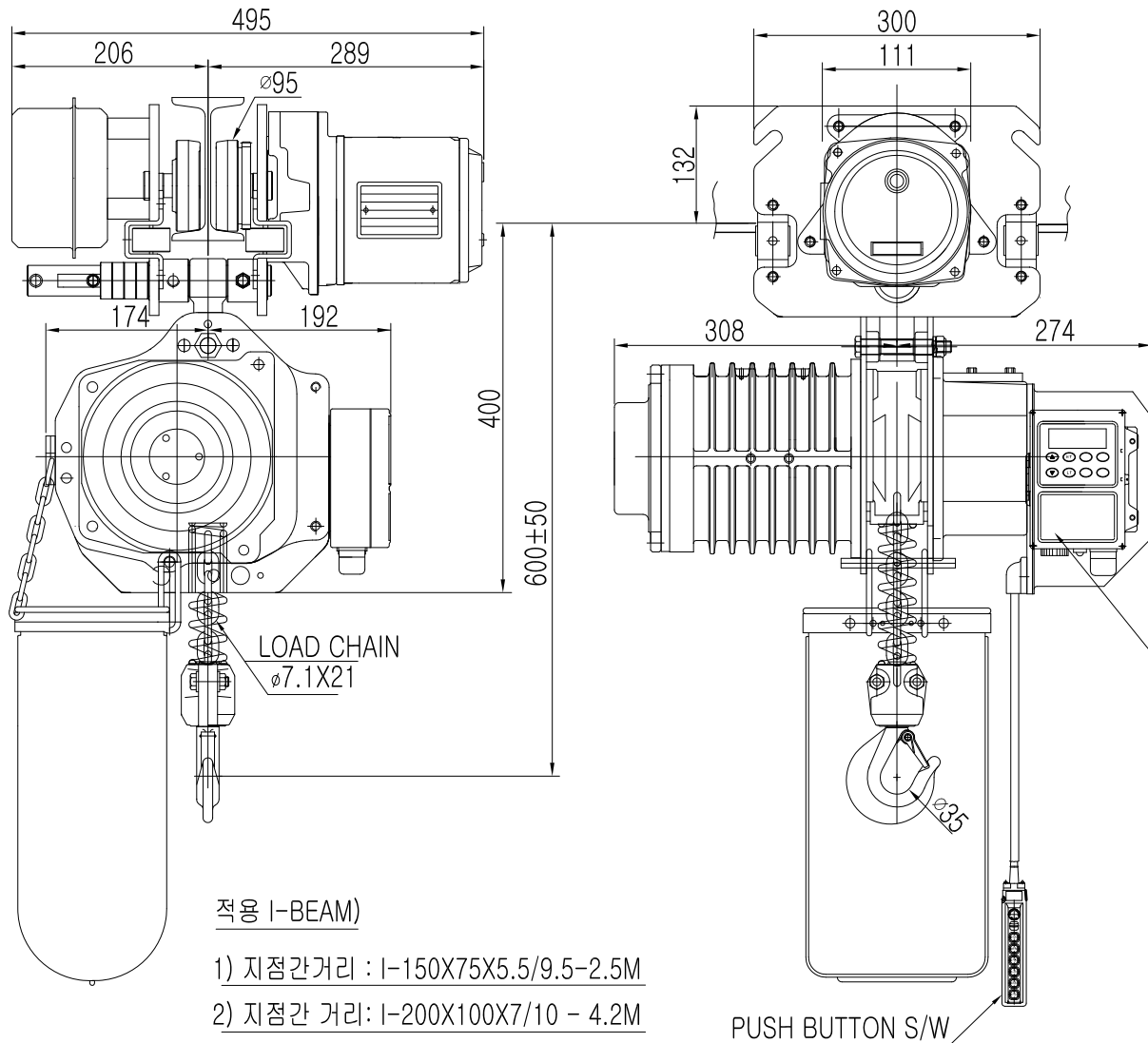
REV.NO	DATE	REVISION	DESCRIPTION	DRAWN	CHECKED	APPROVED



L K HOIST CO., LTD.

L K HOIST

NO	DESCRIPTION	SIZE	MAT'L	Q'TY	WT (kg)	REMARKS



SPECIFICATION

		LK-DAMH-1S			
RATED LOAD	(TON)	1.0			
TESTING LOAD	(TON)	1.25			
LIFTING HEIGHT	(M)	100			
HOISTING	SPEED (M/MIN)	8.2			
	MOTOR (KW)	1.8kw x 4p			
TRAVERSING	SPEED (M/MIN)	22	14	21/7	
	MOTOR (KW)	0.4kw x 4p	0.3kw x 6p	0.4/0.14kw x 4/12p	
POWER SUPPLY	AC220.380.440.460.480Vx3ø x 60 Hz				
OPERATING METHOD	P.B type ON . FL				
LOAD CHAIN	ø7.1 X 21 (1FALL)				
WEIGHT	(KG)	280			
I-BEAM 적용폭		75 ~ 150MM			

적용 I-BEAM)

- 1) 지점간거리 : I-150X75X5.5/9.5-2.5M
- 2) 지점간 거리: I-200X100X7/10 - 4.2M
- 3) 지점간거리 : I-250X125X7.5/12.5-6.2M
- 4) 지점간거리 : I-300X150X10/18.5-9.2M

LOAD LIMITER

NOTE)

- 1)점검 설비를 갖출 것
- 2)인허가 서류를 완성검사시 제출 할 것

TITLE		ELECTRIC CHAIN HOIST		PROJECTION	
WORK NO		WORK NAME	LK-DAMH-1S		
			SCALE	Q' TY	
			N/S	1	
DRAWN	CHECKED	REVIEWED	APPROVED	DRAWING NO	
김창기				CODE NO	
2010.08.01					

REV.NO	DATE	REVISION DESCRIPTION	DRAWN	CHECKED	APPROVED



L K HOIST CO., LTD.