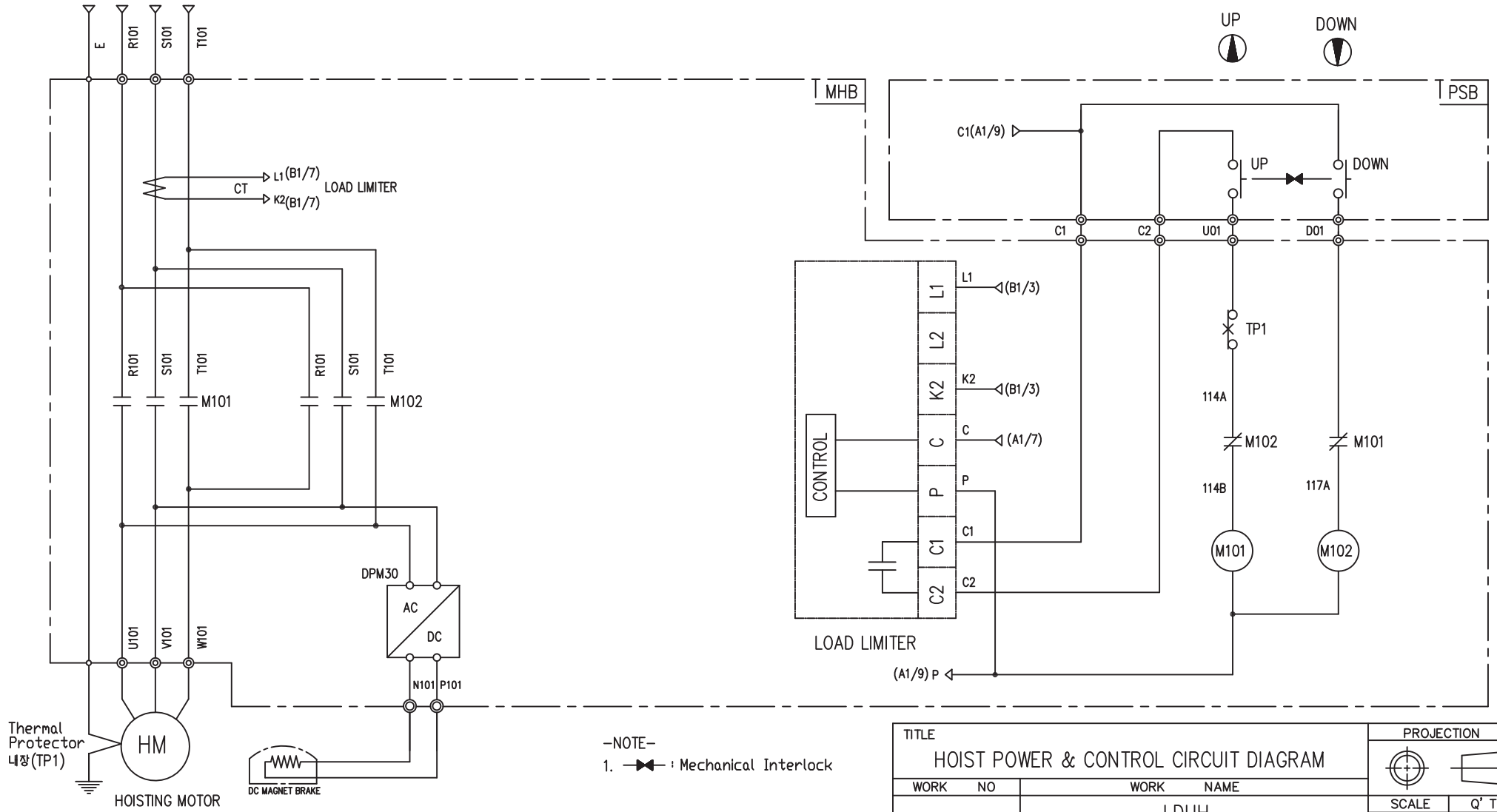




HOISTING POWER  
(A1/3)(A1/3)(A1/3)(A1/3)

--- PENDANT SWITCH ---



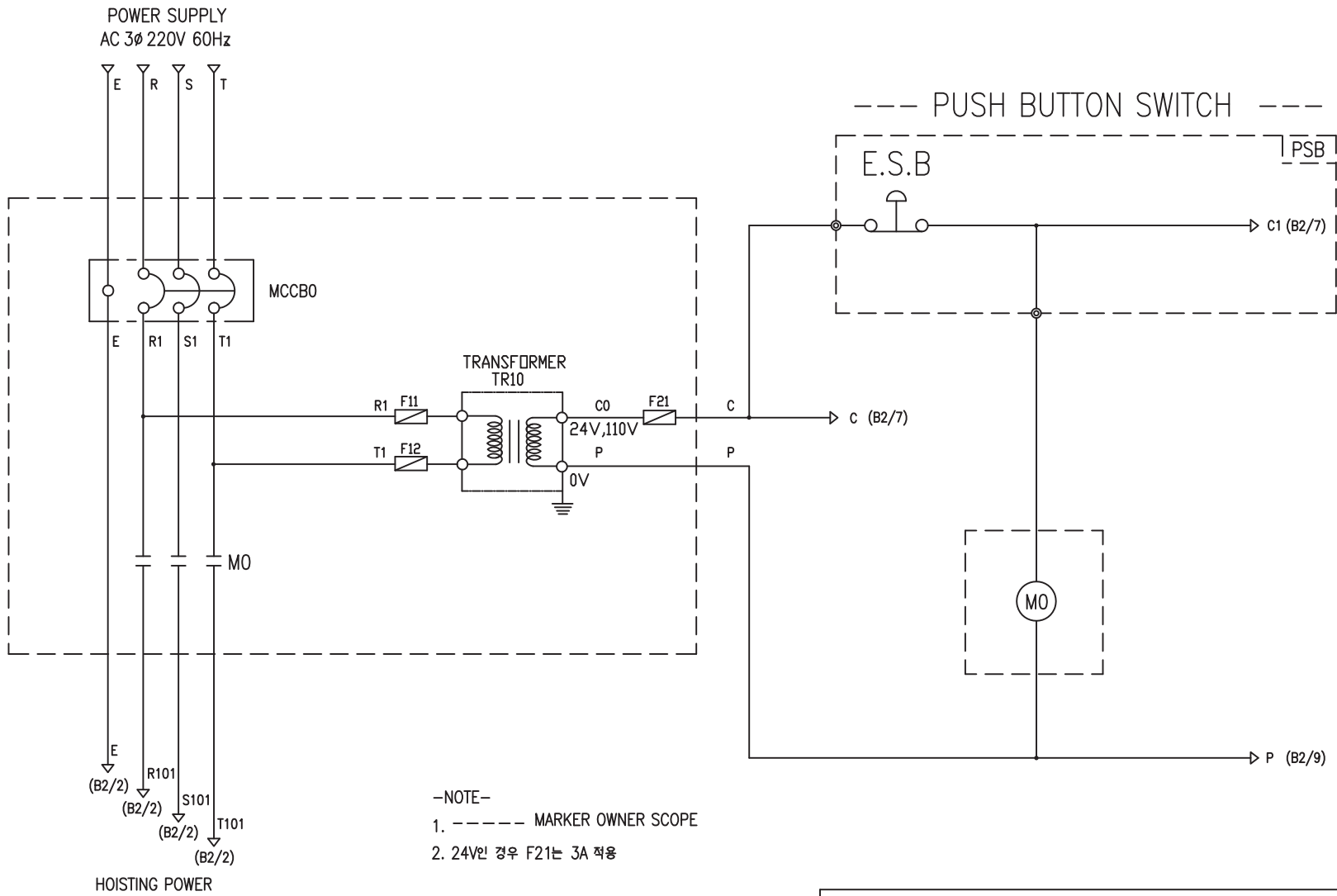
-NOTE-  
1. : Mechanical Interlock

SPECIFICATION	MAGNET CONTACT	SILICON RECTIFIER				LOAD LIMITER	Thermal Protector	HOIST MOTOR
SYMBOLS	M101, M102	DPM30				-	TP1	HM
		AC220V	AC440V	AC460V	AC480V			
DESCRIPTION	GMC12 DMC12	DC99V	DC198V	DC207V	DC216V	LKDL-501	17AM032	1.8Kw * 6P
MAKER	LS DONGA	LK				LK	Texas Instruments	LK

TITLE HOIST POWER & CONTROL CIRCUIT DIAGRAM						PROJECTION 	
WORK NO. 602		WORK NAME LDUH				SCALE 1/1	Q' TY 1
220V, 440V, 460V, 480V							
DRAWN LEE.G.H	CHECKED	REVIEWED	APPROVED	MODEL	CODE NO		
2010.10.13							
L K HOIST CO., LTD.							

POWER CIRCUIT

CONTROL CIRCUIT

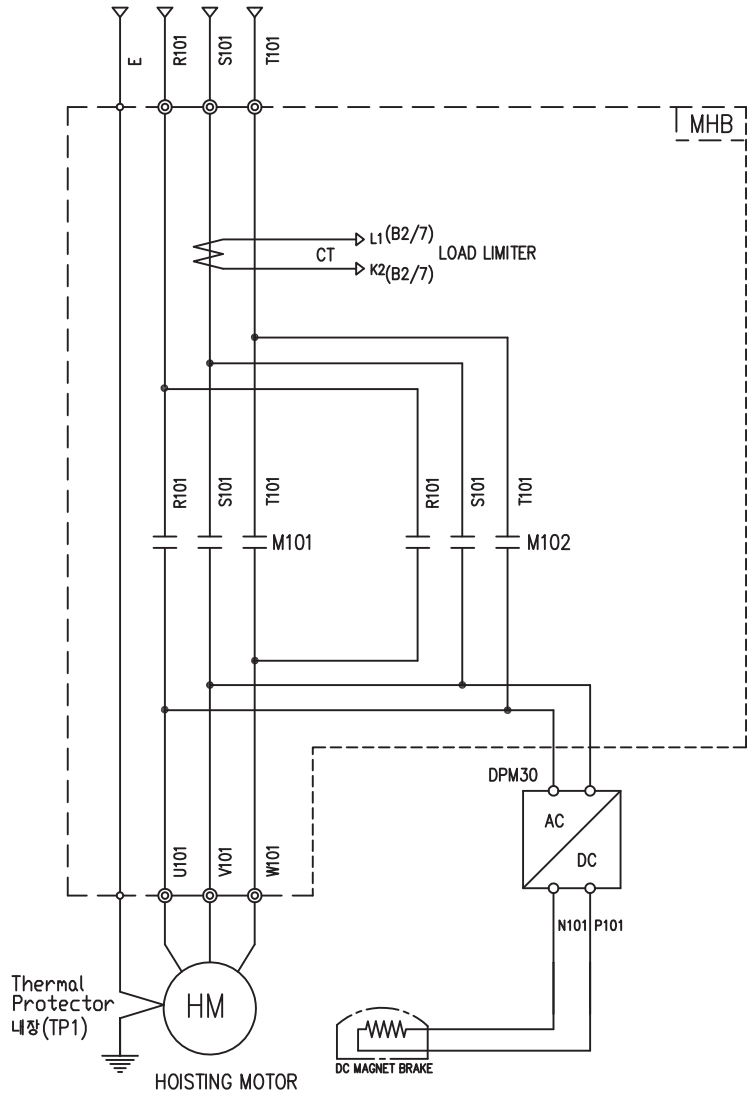


SPECIFICATION	NO FUSE BREAKER	MAGNET CONTACT		TRANSFORMER	FUSE	
SYMBOLS	MCCB0	M0		TR10	F11, F12, F21	
DESCRIPTION	220V	20A	GMC18	DMC18	30VA	1A
	380V	10A				
	440V	10A				
	460V	10A				
	480V	10A				
MAKER	LS	LS	DONGA	LK	-	

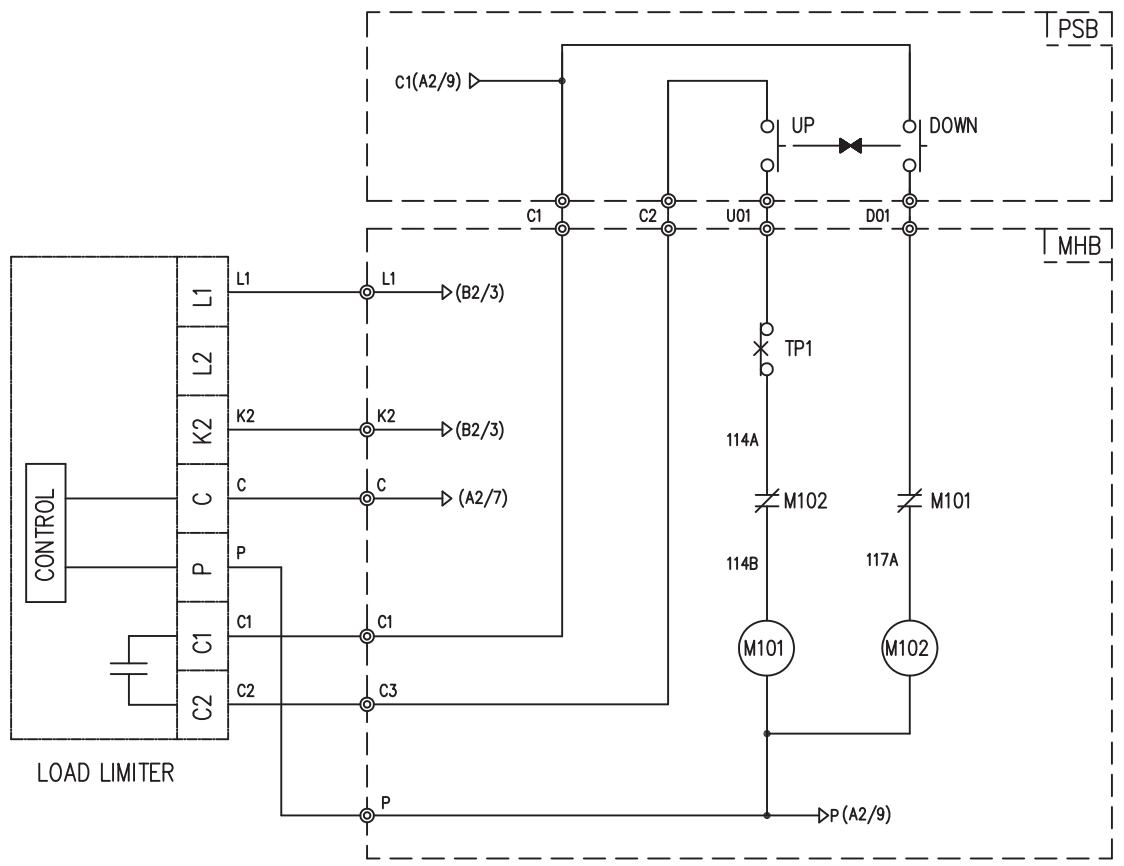
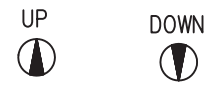
TITLE						PROJECTION	
MAIN POWER & CONTROL CIRCUIT DIAGRAM							
WORK NO	WORK NAME					SCALE	Q' TY
604	LDUH					1/1	1
220V, 380V, 440V, 460V, 480V							
DRAWN	CHECKED	REVIEWED	APPROVED	DRAWING NO			
LEE.G.H				CODE NO			
2010.10.13							
L K HOIST CO., LTD.							

HOISTING POWER

(A2/3)(A2/3)(A2/3)(A2/3)



-- PUSH BUTTON SWITCH --



- NOTE-
- : Mechanical Interlock
  - : Marker owner scope

SPECIFICATION	MAGNET CONTACT	SILICON RECTIFIER				LOAD LIMITER	Thermal Protector	HOIST MOTOR
	M101, M102	DPM30				-	TP1	HM
		AC220V	AC440V	AC460V	AC480V			
DESCRIPTION	GMC12   DMC12	DC99V	DC198V	DC207V	DC216V	LKDL-501	17AM032	1.8Kw * 6P
MAKER	LS   DONGA	LK				LK	Texas Instruments	LK

TITLE HOIST POWER & CONTROL CIRCUIT DIAGRAM					PROJECTION 	
WORK NO	WORK NAME				SCALE	Q' TY
605	LDUH 220V, 440V, 460V, 480V				1/1	1
DRAWN	CHECKED	REVIEWED	APPROVED	MODEL		
LEE.G.H				CODE NO		
2010.10.13						
<b>L K HOIST CO., LTD.</b>						

## SCHEDULE OF TECHNICAL DATA

1. SERVICE	HOISTING
2. MANUFACTURE	LK . MACHINERY CO. LTD
3. MOTOR MODEL NO	1.8 - 6 - 48
4. RATED POWER	1.8 KW × 6 P
5. RATED VOLTAGE AND FREQUENCY	480 V      60HZ
6. MOTOR TYPE	SQUIRREL CAGE ROTOR TYPE
7. RATING	30 MIN
8. LOCATION	IN-DOOR , OUTDOOR
9. INSULATION CLASS	B
10. DESIGN TEMPERATURE RISE (BY RESISTANCE)	80℃
11. FULL LOAD SPEED	1150 RPM
12. FULL LOAD CURRENT	4.1 A
13. STARTING CURRENT AT RATED VOLTAGE	20.5 A
14. MINIMUM STARTING VOLTAGE	437 V
15. EFFICIENCY AT 100% RATED LOAD	66.5 %
16. POWER FACTOR AT 100% RATED LOAD	66 %
17. STARTING TORQUE	245 %
18. TYPE OF ENCLOSURE	전폐형
19. TYPE OF BEARING	PL : 6008DD    OPL : 6207ZZ
20. MOUNTING	VERTICAL
21. MAXIMUM AMBIENT TEMPURE	40℃
22. BEARING LUBRICATION	GREASE
23. STARTING METHOD	FULL VOLTAGE